

Portfolio

Selected works by Sophia Gonzalez

Table of Contents



Winter 2026 3 - 7



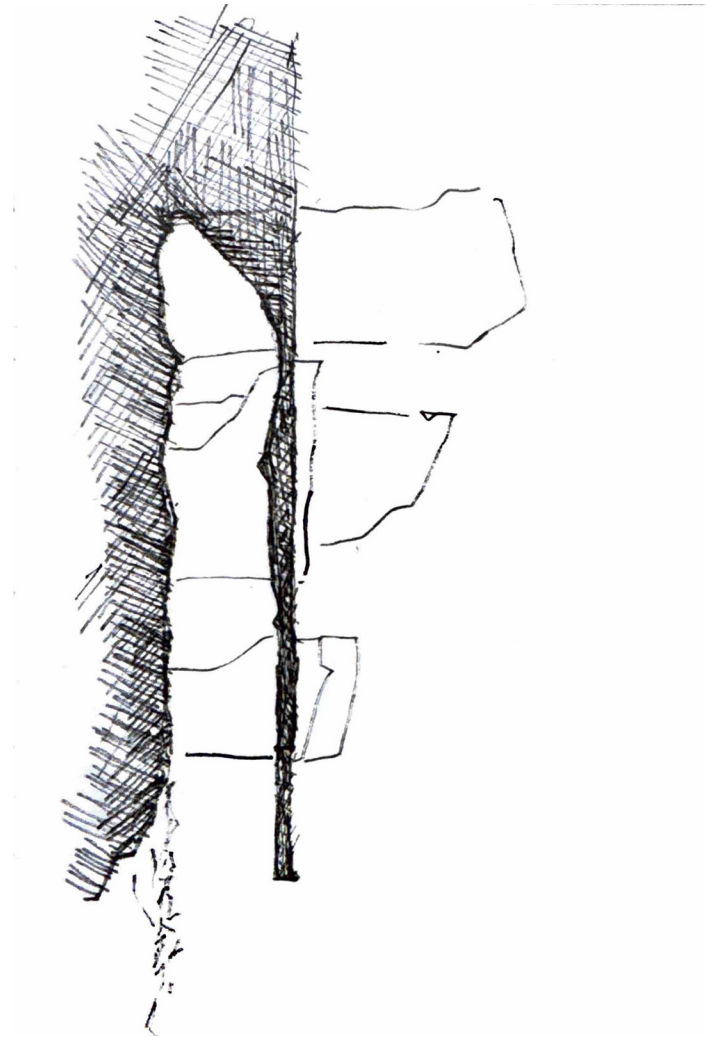
Vellum 2025 8 - 10



Fall 2025 11 - 15

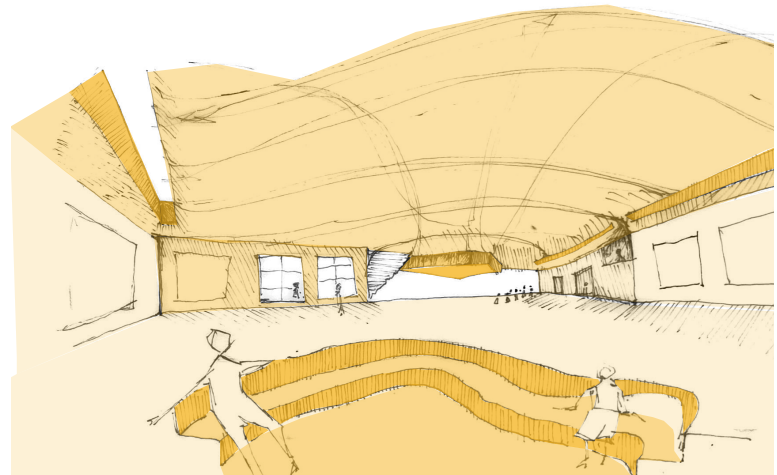
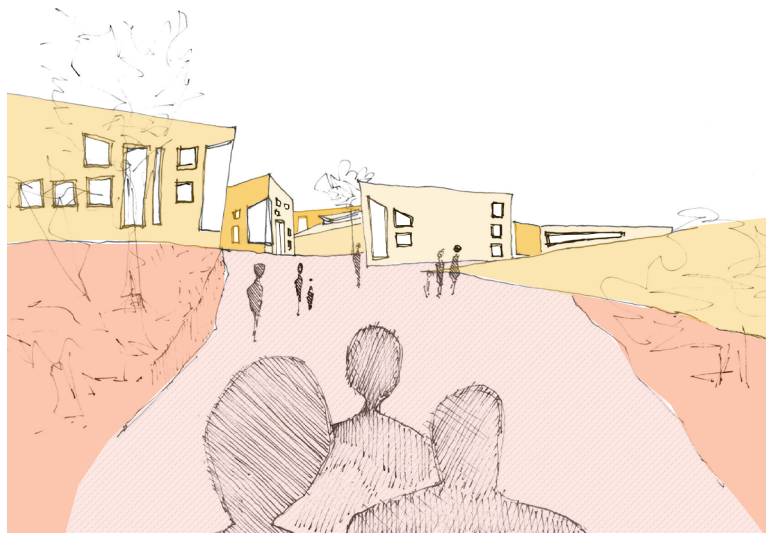
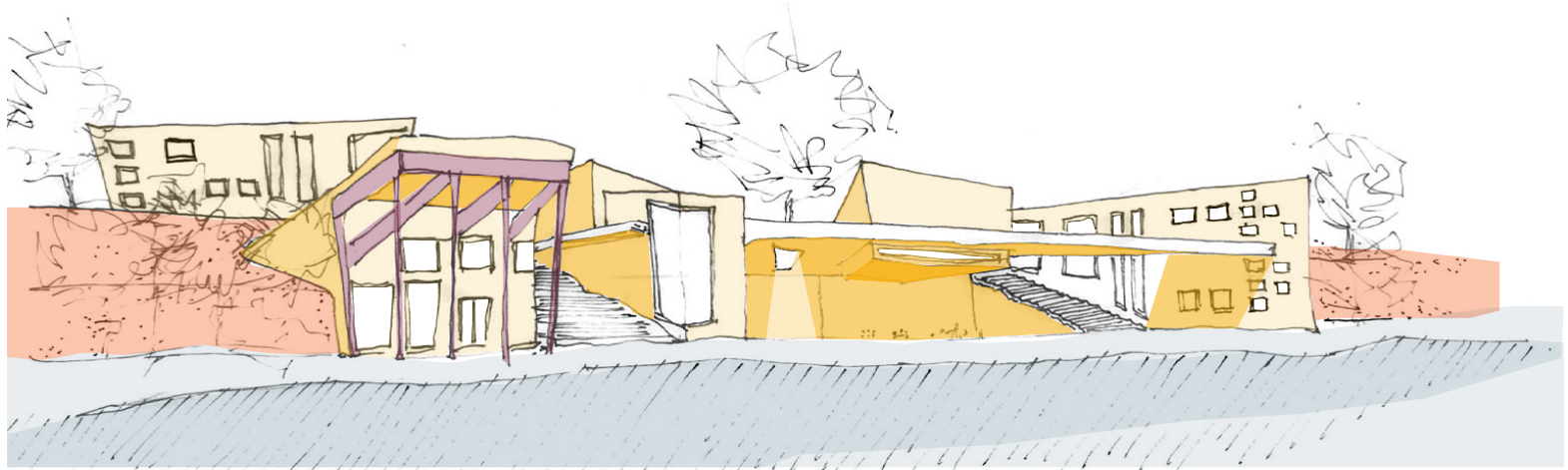
Winter 2026

This center for climate change aims to address the presence of global warming by separating the “whole” into “parts” to encourage community engagement in the liminal spaces, integrating them completely with the natural language of the region to better engage the People with the Problem. Our site, located in Austin Texas uses the local geology of limestone to break up the program, letting the park above permeate and seep into the built environment. The circulation of the project gradually guides people through, around, down to the Colorado River. Site lines to downtown and to nature are prioritized and emphasized through orientation of massing, highlighting the importance of connection to community and to the world around us.

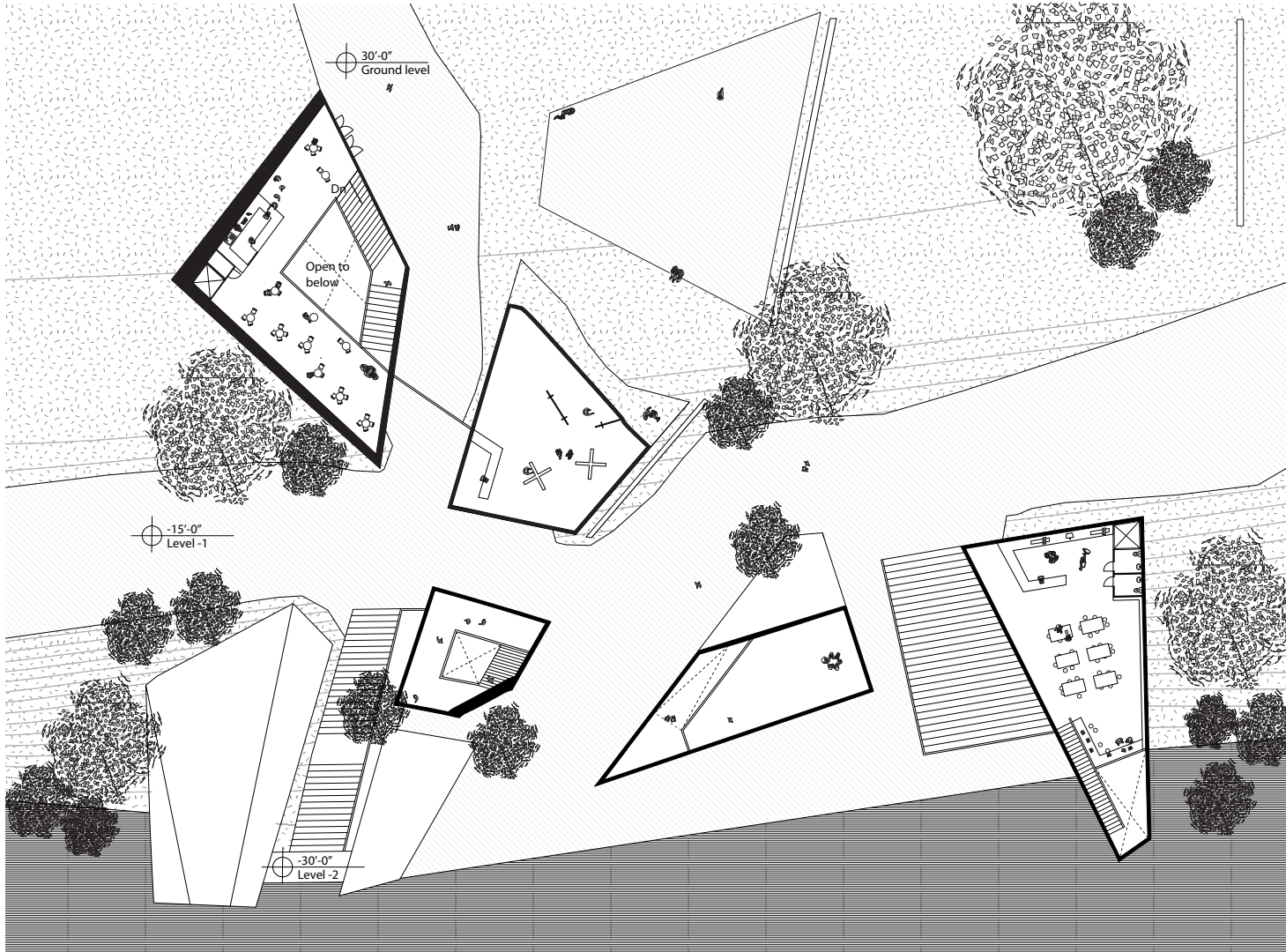




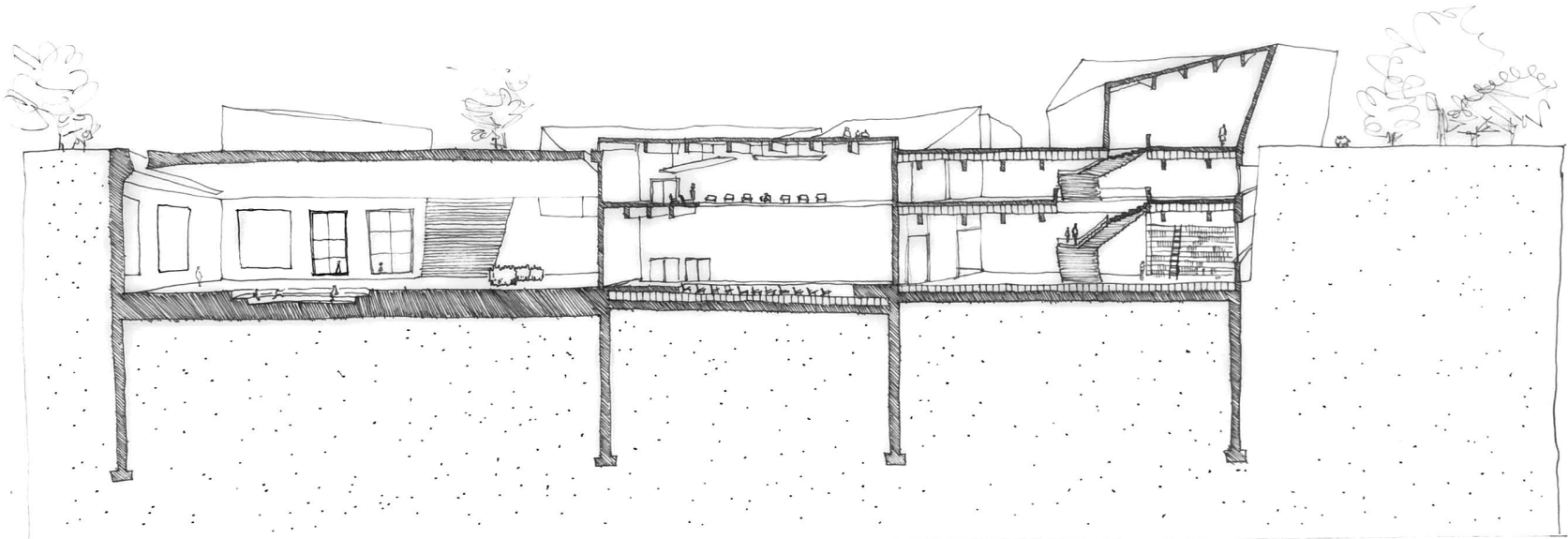
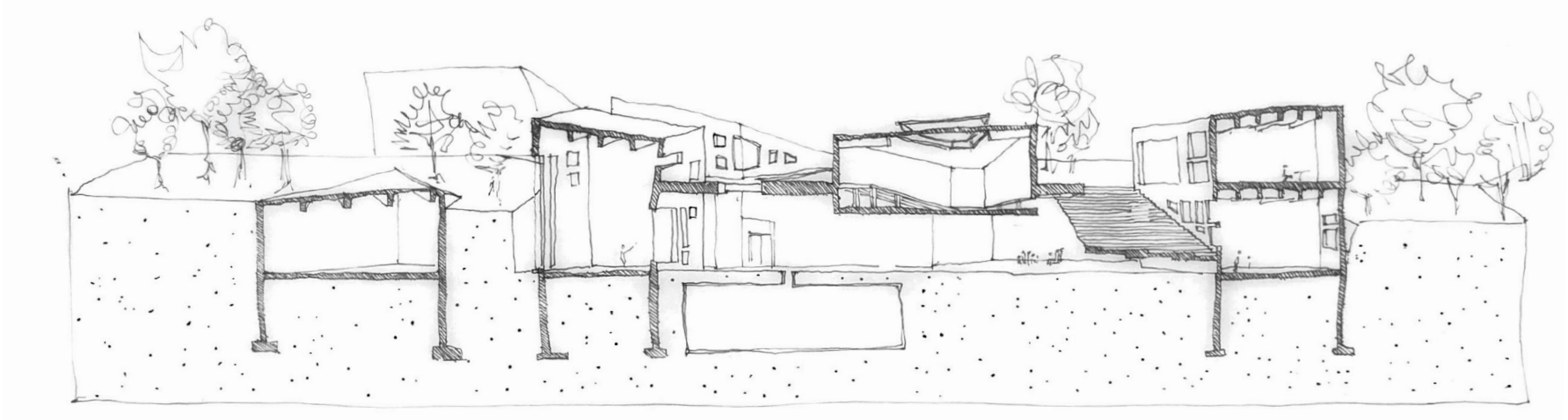
Final model, concrete and chipboard



Vignettes



Ground floor plan

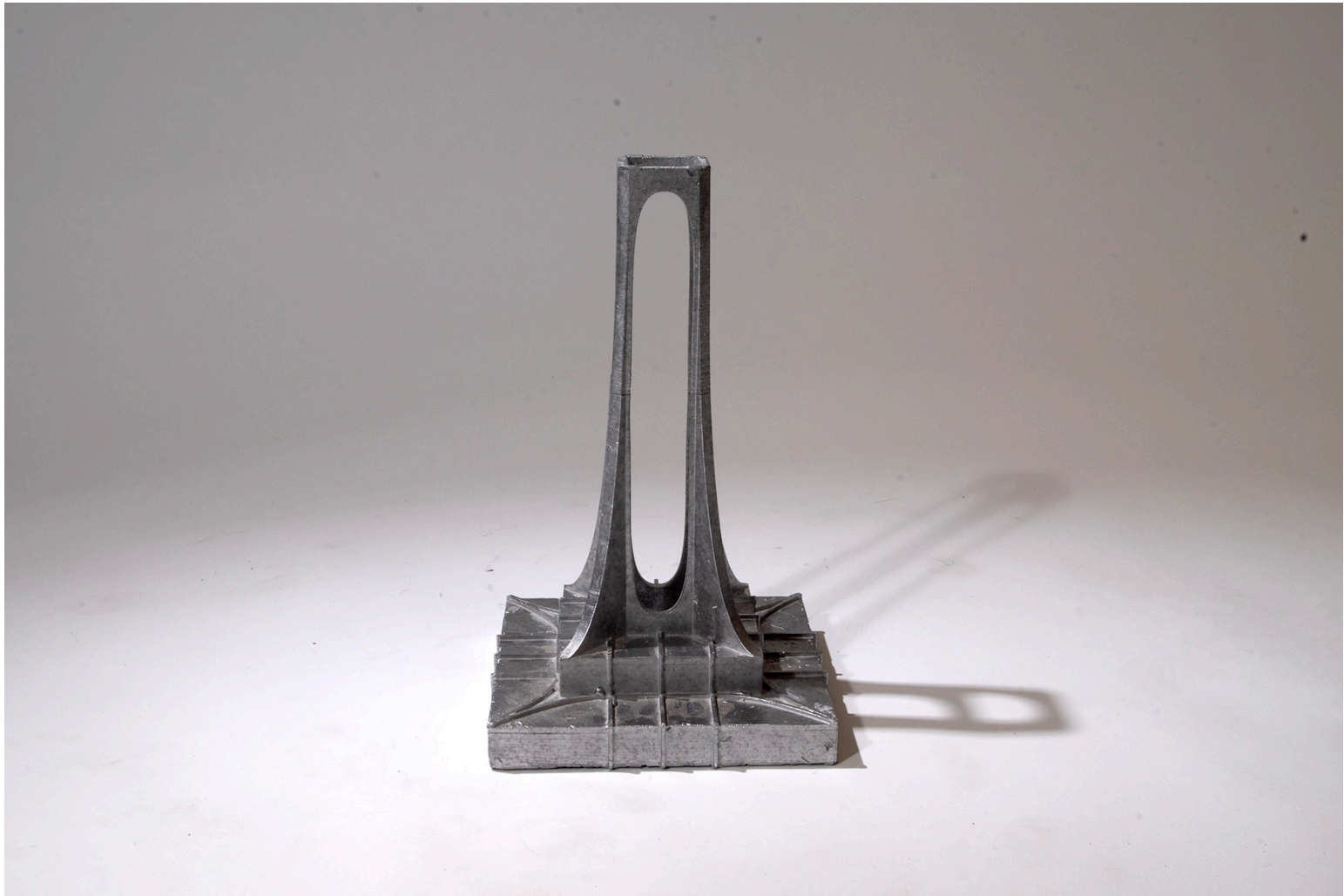


Sections

Vellum 2025

Lamp designed for annual furniture competition. Cast aluminum base, mild steel post and hand sewn lampshade from scraps of fabric found in my room. All materials used were locally sourced from the central coast.





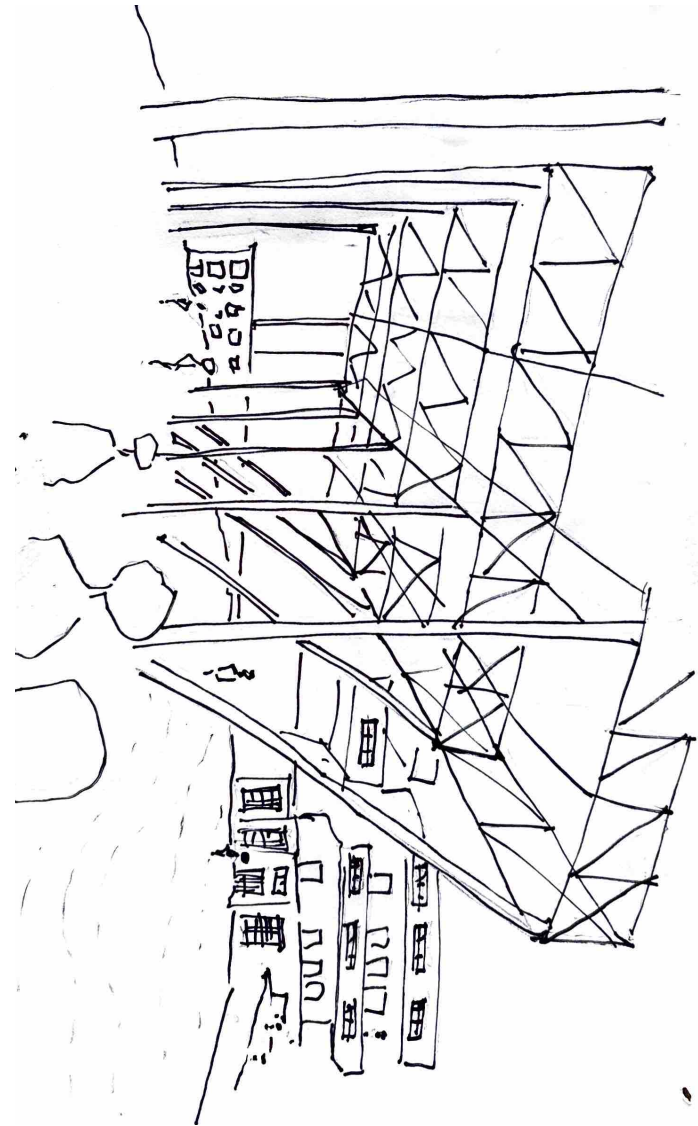
Aluminum cast base

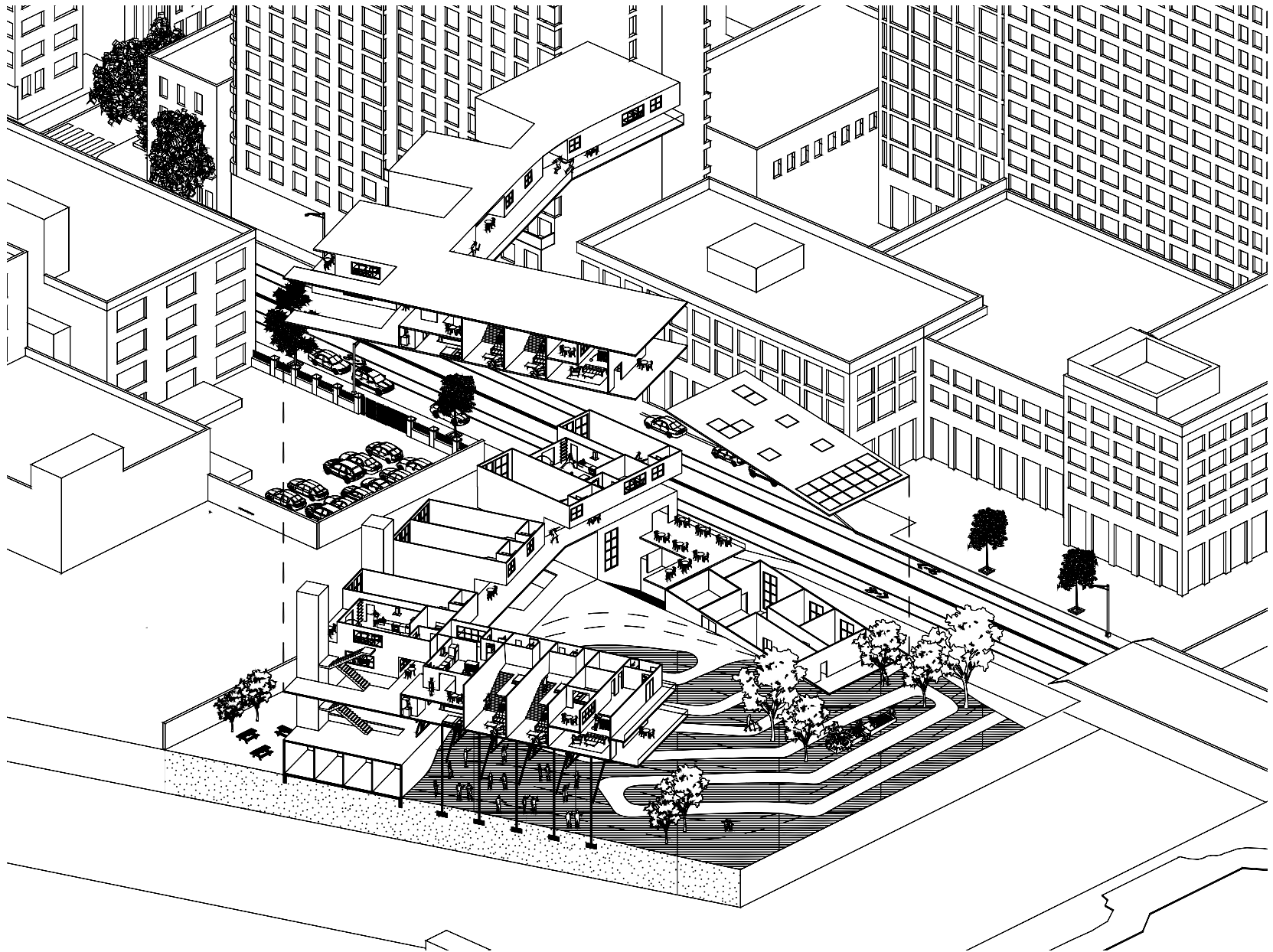


Hand sewn lampshade

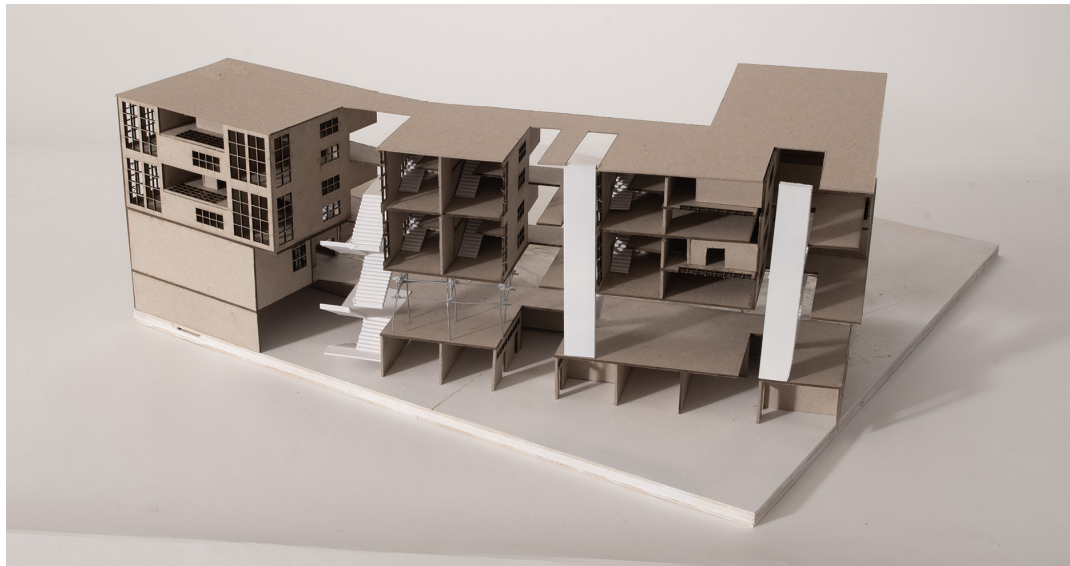
Fall 2025

A history of transient artist communities moving from midtown Manhattan (1940s) to the East village (1990s) to Brooklyn (present) shows a connection to an art scene that encourages resilience and allows for pure, unfiltered creative expression. Situated in an industrial sector of the city, Gowanus Brooklyn offers a chance to bring a crucial part of society together. This project models a rooted, self determined artist ecology through varying unit sizes/prices, public programming, communal spaces and sustainable practices. This design provides opportunities to LIVE, WORK, EAT, PLAY and LEARN. An exciting topography draws people up from the canal, transforming a post industrial waterfront into a civic landscape that promotes gathering, entertaining, and observing.

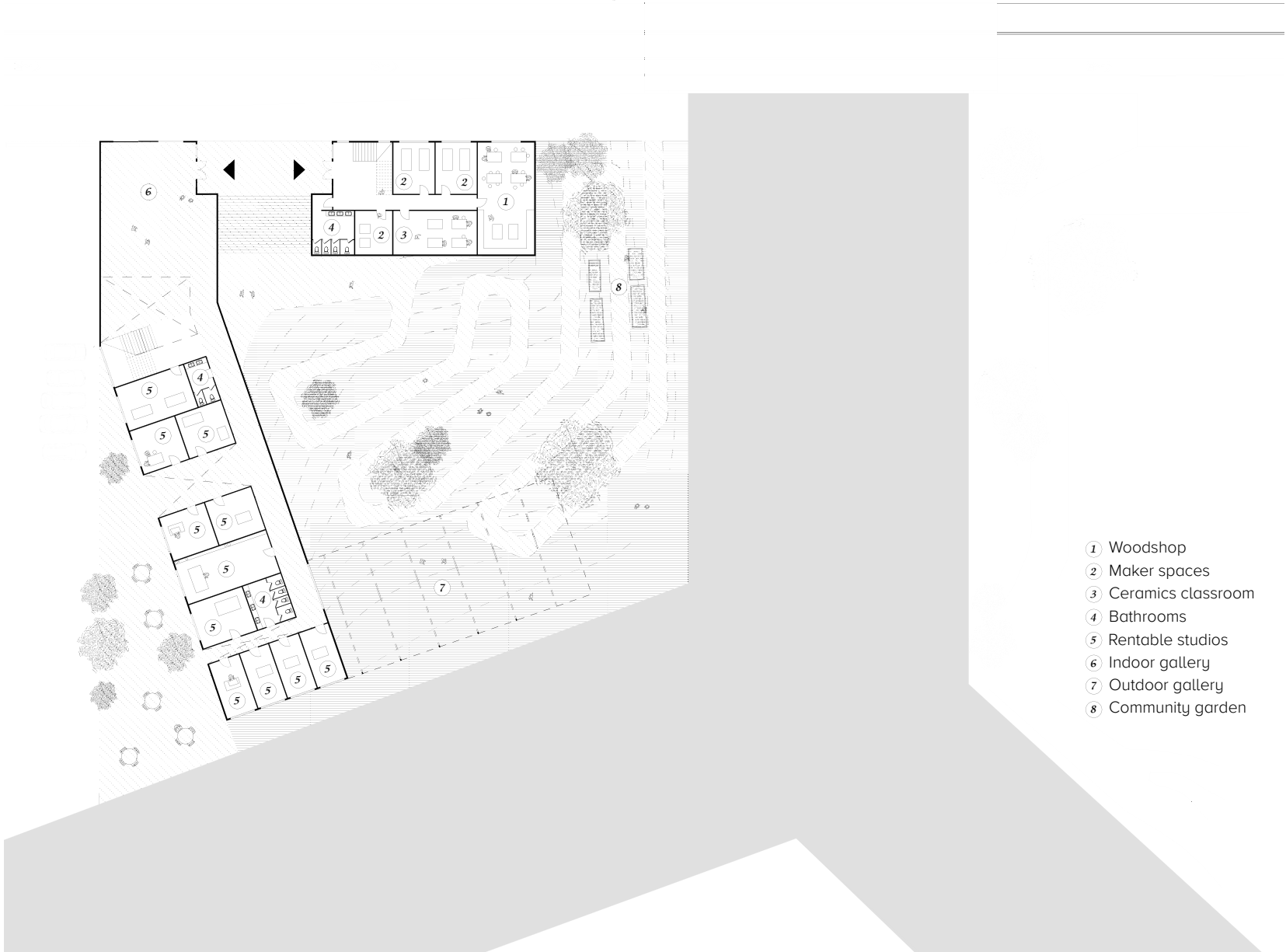




Exploded axonometric drawing

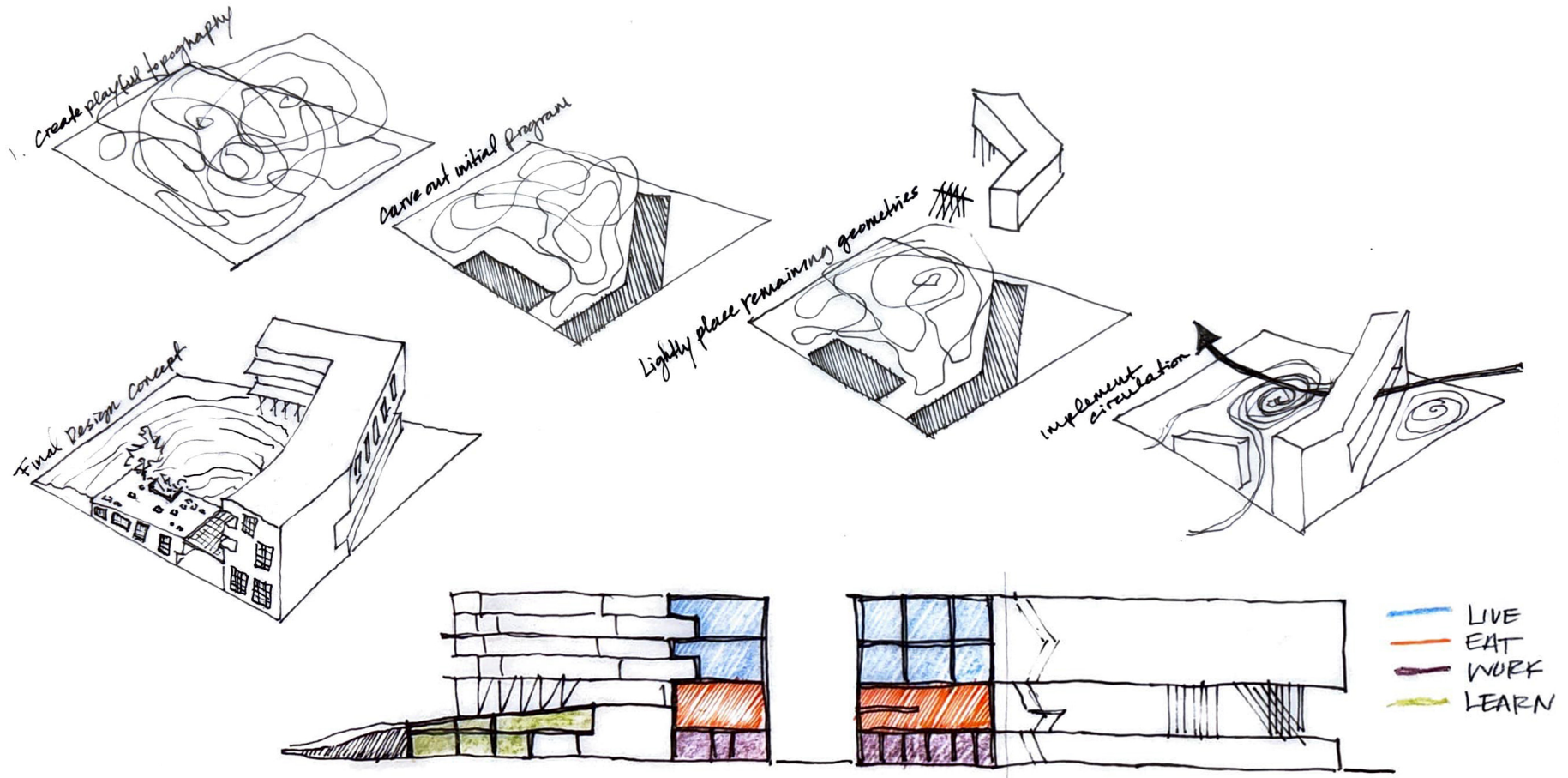


Final model, chipboard and wire



- ① Woodshop
- ② Maker spaces
- ③ Ceramics classroom
- ④ Bathrooms
- ⑤ Rentable studios
- ⑥ Indoor gallery
- ⑦ Outdoor gallery
- ⑧ Community garden

Ground floor plan



Concept diagram